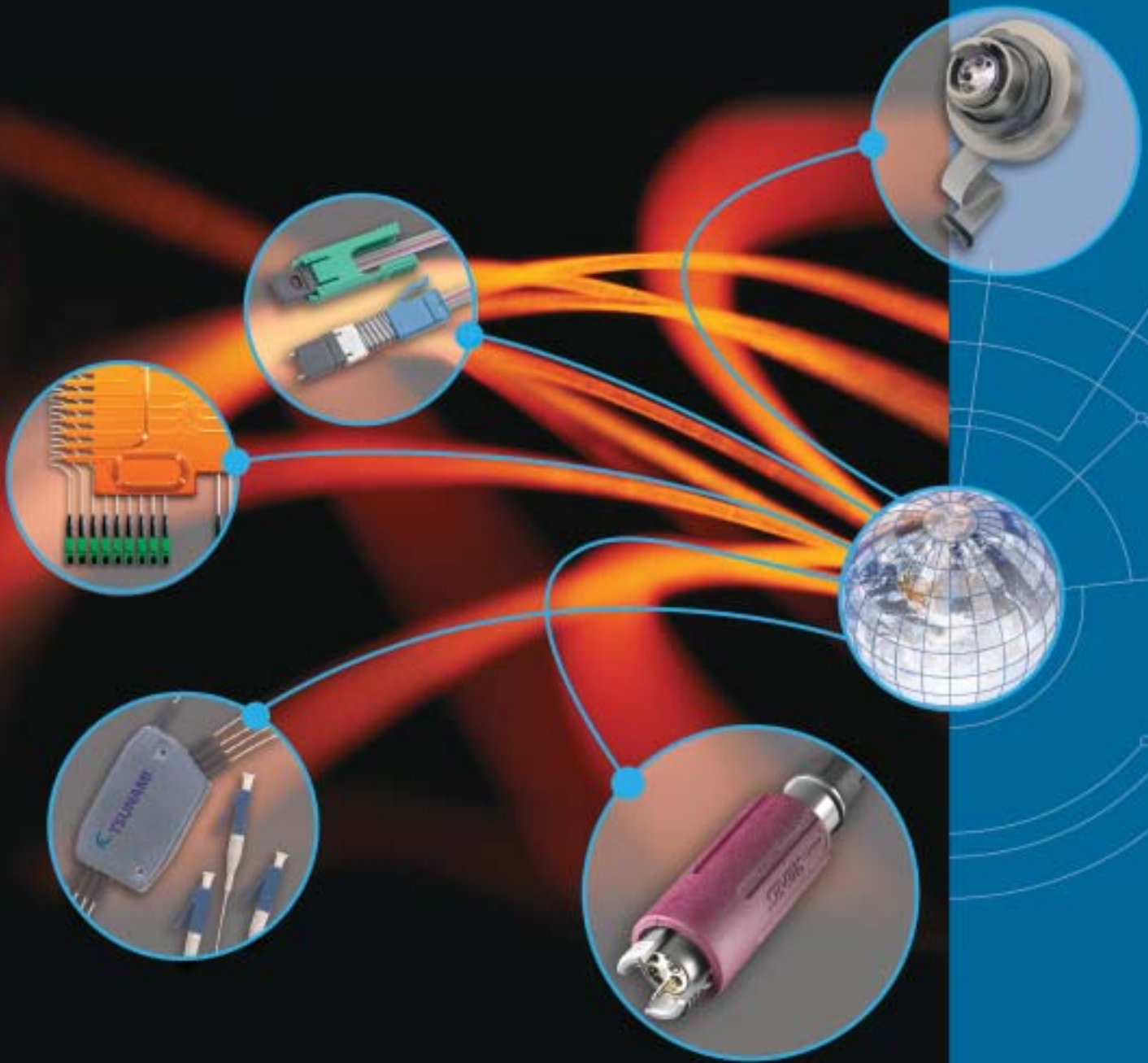


STRATOS LIGHTWAVE

Passive Optical Products Guide



Innovative Optical Solutions

STRATOS

Sinus-Electronic
Marcel Leukhardt
Tel.: 07132-9969-14
Fax: 07132-9969-50
@: leukhardt@sinus-electronic.de

Single Fiber Products

CONNECTORS

LC Connectors

- New one-piece Unibody design provides extra support and rigidity
- Singlemode and multimode (APC or UPC)
- Compact size allows for greater port density
- Improved side-load performance and latch strength



Industry-Standard Connectors

- ST, SC, Escon, FC, MU, BSC/BSCII, Biconic, FDDI
- Singlemode and multimode (APC or UPC)



Quick-Cure™ Connectors

- Field installable
- LC, SC, FC and ST form factors
- Termination in under 2 minutes
- Patented pedestal tip simplifies installation
- Available for larger fiber sizes



COMPONENTS AND SPECIALTY PRODUCTS

Bulkhead Adapters

- LC, SC, FC, ST and MU form factors and hybrid configurations
- Singlemode and multimode
- Simplex, duplex and quad configurations



Plug-in Converter Adapters

- Enables quick and easy form factor conversion
- Singlemode and multimode
- Standard orientations include SC-LC, SC-MU and LC-MU



Compact LC Adapter System

- Innovative design provides additional board real estate
- Singlemode and multimode
- Easy to install



Plug-In Fixed Attenuators

- Provides fixed attenuation levels (1-20 dB)
- LC, SC, FC, ST and MU form factors
- Custom attenuation levels available



ASSEMBLIES

Cable Assemblies

- LC, SC, FC, ST, MU, ESCON, FDDI and BSC/BSCII
- Factory terminated and tested
- Trunk, patchcord and custom configurations available
- Telcordia compliant



Mode Conditioning Patch Cords

- Eliminates Differential Mode Delay (DMD)
- Compatible with all industry connector styles
- Custom configurations available



In-Line Attenuators

- Provides fixed attenuation levels (5 - 30 dB)
- Custom attenuation levels available
- Available terminated or unterminated



CATV/Optical Service Nodes

- Provides outdoor interconnections
- ST, SC, FC, MU or LC connectors (APC or UPC)
- 2 to 12 fiber count



Test Loopbacks

- Facilitates burn-in and system testing
- Singlemode and multimode
- LC, SC, MU and ESCON form factors
- Custom attenuation levels available



PHD Panel Mount

- Robust connector interface
- Up to 32 fiber channels
- Singlemode or multimode



PHD Backplane System

- Low-loss backplane interconnect
- Up to 8 fiber channels
- Singlemode or multimode



Multi-Fiber Products

Sinus-Electronic
Marcel Leukhardt
Tel.: 07132-9969-14
Fax: 07132-9969-50
@: leukhardt@sinus-electronic.de

OPTICAL FLEX CIRCUITS



- Compact solution for complex fiber management
- Planar and non-planar configurations
- Preconfigured channels, ports and routings reduces installation time
- Simplifies system architecture
- Automated fiber laying machines provide precise fiber circuit design and tight length tolerances
- Compatible with all industry-standard connectors

COMPONENTS AND SPECIALTY PRODUCTS



Bulkhead Adapters

- Allows fast and easy mating
- Accurate core to core alignment
- Available for MTP, MPX and MT-RJ connectors



Test Loopbacks

- Facilitates burn-in and system testing
- Singlemode and multimode
- MT, MTP, HBMT and MPX form factors
- Custom attenuation levels available
- Customized fiber routing

ASSEMBLIES



HBMT

- High-density backplane connector with up to 24 fiber channels
- Singlemode, premium singlemode or multimode
- Patchcord, trunk and harness cable constructions



MTP

- High-density connector with up to 24 fiber channels
- Singlemode, premium singlemode and multimode
- Patchcord, trunk and harness cable constructions



MT-RJ

- Compact 2-fiber connector
- Singlemode, premium singlemode or multimode
- Patchcord, trunk and harness cable constructions



MT

- High-density ferrule with up to 24 fiber channels
- Singlemode, premium singlemode or multimode
- Patchcord, trunk and harness cable constructions



SMC

- High-density connector with up to 24 fiber channels
- Singlemode, premium singlemode or multimode
- Patchcord, trunk and harness cable constructions



V-Groove Arrays

- High density...up to 48 fiber channels
- Singlemode, premium singlemode or multimode
- Can be terminated to any industry-standard connector



High-Performance Test Assemblies

- Specialized patchcords, harnesses and custom configurations
- Utilize high-precision components for superior optical performance
- Enable accurate, repeatable measurements

CONNECTORS AND ASSEMBLIES



HMA

- 1 to 4 fiber channels, multimode or singlemode
- Hermaphroditic interconnection
- Advanced expanded beam technology
- Rugged field repairable design



Hybrid HMA

- 1 or 2 fiber channels, multimode or singlemode
- 2 standard 16 SWG electrical contacts
- Hermaphroditic interconnection
- Advanced expanded beam technology
- Rugged field repairable design



S900 NAB

- 2 to 4 fiber channels, multimode or singlemode
- Hybrid fiber/electrical options available
- Nickel aluminum bronze material
- Hermaphroditic interconnection
- Advanced expanded beam technology



S960 (Eurocomm TYPE II)

- 2 to 8 fiber channels, multimode
- Hermaphroditic interconnection
- Advanced expanded beam technology
- Rugged field repairable design



HSC

- 1 fiber channel, multimode or singlemode
- Hermaphroditic interconnection
- Advanced expanded beam technology
- Rugged field repairable design



HTC 38999

- 1 to 4 fiber channels, multimode or singlemode
- Hybrid fiber/electrical options available
- MIL-C-38999 series III shell size 13
- Advanced expanded beam technology
- Rugged field repairable design



PHD 38999

- 2 to 72 channels, fiber or hybrid
- Multimode or singlemode
- MIL-C-38999 series II, shell sizes 9 to 25
- Removable termini
- Anti-vibration coupling
- Quick & easy field cleaning



HDLC

- 2 fiber channels, multimode or singlemode
- Hermaphroditic interconnection
- LC physical contact configuration
- Bulkhead removable insert
- Rugged field repairable design



HQLC

- 4 fiber channels, multimode or singlemode
- Hermaphroditic interconnection
- LC physical contact configuration
- Bulkhead removable insert
- Rugged field repairable design



RUGGEDIZED IN-LINE SPLICE

- 2 or 4 fiber channels, multimode or singlemode
- Standard HQLC insert with LC Quick-Cure™
- LC physical contact configuration
- Termination in under 30 minutes



MIL-T-29504 ASSEMBLIES

- MIL-T-29504 approved
- Installs in 38999 and other connectors
- Singlemode, multimode and other fiber types

COMPONENTS & SPECIALTY PRODUCTS



Fiber Optic Rotary Joints

- Provides a rotating axis that allows fiber to rotate 360°
- Singlemode and multimode
- High pressure, water submersion, high RPM and multi-fiber models available
- Water & dust resistant



Active Bulkhead

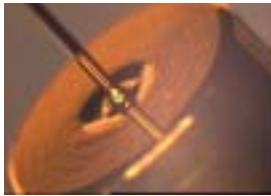
- Transmission distances to 2km using standard multimode fiber
- Integrated Fast Ethernet transceiver and PHY direct to 100BT analog interface
- Industrial temperature and vibration
- Single or dual transceiver ports available

Speciality Fiber Assemblies



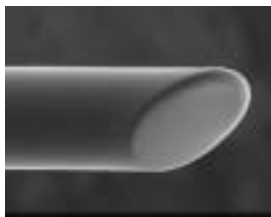
Fiber Stubs & Barrels

- Ceramic stubs for receptacle-style lasers and detectors
- Laser cleaved option eliminates back-reflection
- Complete TOSA/ROSA design & manufacturing



Glass-to-Metal Sealing

- Improved levels of hermeticity
- Mid-span or center-stripped to retain original primary coating
- Highly scalable process to achieve high volume at a low cost



Laser Cleaved Fibers

- Vastly reduced process time with increased yield
- Extremely repeatable process with excellent yield
- 0° to 50° angles achievable with a +/-0.5° tolerance
- 50° angled cleave eliminates the need for external mirrors



Lensed Fibers

- Increased coupling efficiency – precise geometry with superior surface finish
- Parameters optimized for individual applications
- Available AR-coated



Fiber Metalization

- Utilizes Physical Vapor Deposition (PVD)
- Standard layer build up=Ci, Ni & Au
- Allows fibers to be soldered into package



Multiple Fiber Arrays

- 2 or more fibers
- Angle polished and laser cleaved
- Available in silicon, ceramic, fused silica or other material



Polished Ceramic or Glass Pucks

- Single fiber or dual fiber pucks
- Ideal for attaching waveguides within hermetic packages
- Traditional approach for modulator devices



Complete Design & Manufacturing Services

- Integration of all relevant processes
- Kovar feedthrough components customized to application
- Custom design & manufacture of complete hermetic feedthrough assemblies...from chip to connector
- Components and systems designed to Telcordia GR-1221 qualification

WDM Product Components



CWDM MUX/DEMUX/Integrated

- Mini and Standard package size
- Bi-directional communication
- Low IL/high isolation/extended temperature
- Custom configurations available
- Up to 18 channels per module



OADM Modules

- 1 to 4 channels per module
- Low IL for long links
- Qualified to Telcordia & NEBS standards



DWDM Interleaver

- 50/100GHz and 100/200GHz
- Very low dispersion
- Temperature control not required
- Undergoing qualification to Telcordia & NEBS
- For use over S, C and L bands



Integrated Modules

- Integration of pluggable and discrete active components
- Rack mount modules
- Upgrades for existing networks
- Custom solutions



Sinus-Electronic □
Marcel Leukhardt □
Tel.: 07132-9969-14 □
Fax: 07132-9969-50 □
@: leukhardt@sinus-electronic.de

Premium Fiber Optic Services and Solutions

In addition to the broad range of fiber optic products included in this catalog, Stratos Lightwave also offers a full suite of related fiber services. With ISO 9001:2000 certified operations and a design engineering staff dedicated to custom product development, Stratos possesses the resources and expertise to offer high-precision custom solutions for virtually any optical interconnect application. Services include:

- Custom Product Development
- Fiberoptic Termination, Testing & Packaging
- Integrated Active/Passive Optical Solutions; Value-Added Modules
- Active & Passive Device Termination
- Cable Management Solutions
- Test Cable Refurbishment
- Rapid-Turn Prototyping

For additional information, please contact us directly at 708-867-9600 or email info@stratoslightwave.com.

STRATOS

Stratos Lightwave, Inc.

7444 West Wilson Avenue
Chicago, IL USA 60706-4549

T 708.867.9600
F 708.867.4140
E info@stratoslightwave.com

MTP is a registered trademark of US Conec, Ltd.
HBMT is a trademark of Molex, Inc.
BSC/BSCII is a trademark of Molex, Inc.

Stratos Ltd (UK)

Hollands Road Industrial Estate
Haverhill, Suffolk CB9 8PR
England

T +44 (0)1440 706 441
F +44 (0)1440 762 044

PHD is a trademark of ITT Cannon
Quick-Cure is a trademark of Stratos Lightwave, Inc.

Catalog F99-0311

www.stratoslightwave.com