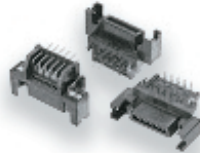
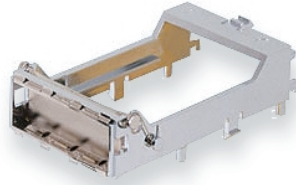


GIGABIT INTERFACE CONVERTER (GBIC) FAMILY OF PRODUCTS

GBIC Module



GBIC Guide Rail



GBIC Connectors

Stratos Lightwave offers a variety of Gigabit Interface Converter (GBIC) Products.

Stratos GBIC Transceivers are high performance optical modules that operate in a variety of communication protocols. They use the SC connector interface and are "hot pluggable", allowing for design flexibility and ease of mission critical networking/field service operations.

Stratos GBIC Guide Rails provide alignment, retention, and shielding solutions for all standard GBIC implementations (per SFF 8053 specification) for a switch, server, disk drive and other short and long-range data communications applications. The spring loaded metal door preserves EMI integrity when no module is present. The GBIC Rails can be mounted vertically or horizontally.

Stratos Right Angle GBIC Connectors provide interconnection solutions for all standard GBIC implementations (per SFF 8053 specification) for switch, server, disk drive and other short and long range data communications applications. The integral ESD ground strap and alignment system enables blind mating, hot plugging, and provides a secure connection path to system/chassis ground.

Protocols Available GBIC Transceiver

- Gigabit Ethernet (1.25 GBaud)
- Fibre Channel (1.0625 GBaud)
- 2X Fibre Channel (2.125 GBaud)

Features GBIC Transceiver

- 850 or 1310 nm Lasers
- Single +3.3 or +5 Volt Power Supply Option
- 75Ω AC coupled PECL level termination lines
- Supports Serial ID functionality
- Compliant with ANSI X3T11 Fibre Channel specification for optical links
- Compliant with GBIC specification

Functionality GBIC Guide Rail

Stratos GBIC Guide Rails enable a host platform to support a wide variety of cable media types and transmission ranges by plugging in the desired interface converter per the SFF 8053 specification.

Features GBIC Guide Rail

- Options for .062", .093", and .125" thick PCB's
- High spring rate bezel gaskets for low EMI
- Wave Solderable/Aqueous Washable
- UL 94 V-0 insulator rating
- Compliant with SFF 8053 Rev 5.2a specifications

Functionality Right Angle GBIC Connector

Stratos GBIC Guide Rails enable a host platform to support a wide variety of cable media types and transmission ranges by plugging in the desired interface converter per the SFF 8053 specification.

Features Right Angle GBIC Connector

- Options for .062" and .093" thick PCB's
- Gold plated for high mating cycle durability
- Integral PCB retention and ESD protection feature
- Wave Solderable/Aqueous Washable
- UL recognized/CSA certified



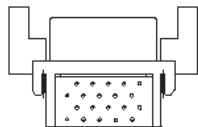
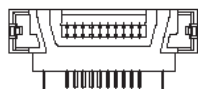
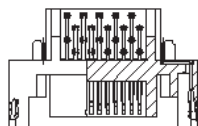
Innovation Brought To Light

GIGABIT INTERFACE CONVERTER (GBIC) FAMILY OF PRODUCTS

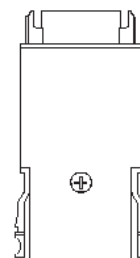
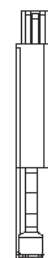
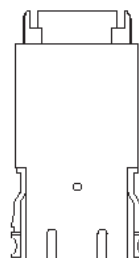
GBIC Guide Rail



GBIC Right Angle Connector



GBIC Transceiver



Part Numbering Scheme/Ordering Information

Please contact Stratos Lightwave directly for further part number and ordering information.

Related Products

None

Company Contact Information

North America

7444 W. Wilson Avenue
Chicago, IL 60706
(708) 867-9600 Fax:(708) 867-9621
(800) 323-6858
www.stratoslightwave.com

Europe

Hollands Road Industrial Estate
Haverhill, Suffolk CB9 8PR
United Kingdom
+44 (0) 1440 706441
Fax: +44 (0) 1440 762044



Innovation Brought To Light