



The HMA connector series, a small hybrid connector suited for a vast array of applications.

The innovative designs ensure its ability for deployment in the toughest environments where high performance and total reliability are critical.

Benefiting from Stratos expanded beam technology, with a long and proven industry track record, the precision optical alignment system creates immunity from water, mud, dust oil and other contaminants.

The HMA Hermaphroditic coupling eliminates the need for adaptors and male and female mating halves. Hermaphroditic housings allow for rapid deployment, creating low loss Singlemode, Multimode and Hybrid daisy chained links in a variety of planforms ranging from simplex fibre to a copper Hybrid. The HMA is ideally suited for environmental extremities where low maintenance and quick reparability is necessary, the connectors are uniquely field installable and rapidly field repairable.

### Features:

- Advanced expanded beam technology
- Hermaphroditic interconnection
- 1 to 4 Fibre channels Singlemode or Multimode
- Hybrid electrical & fibre channel options available
- Rugged field repairable connector design
- keyed boot for 'Blind Mating'

### Benefits:

- Best optical performance available
- No adaptors necessary
- Combined fibre and electrical channels
- Inexpensive, low downtime field repair
- Easy clean, no special tools
- Termination in <30 minutes

### Applications:

- Broadcast
- Military communications
- Industrial
- Petrochemical

### Materials:

- Anodized high grade lightweight alloy
- Neoprene BR568 Grip ring with colour coding and company logo options



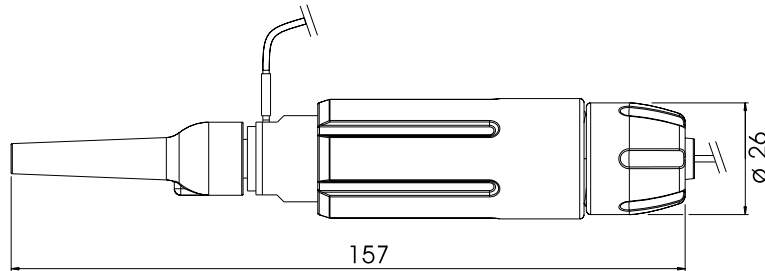
Performance:	
Optical Loss	50/125 @ 850/1300nm 0.7 dB typ 9/125 @ 1310/1550nm 1.0 dB typ
Return Loss	9/125 @ 1310/1550nm >45dB (typical 48dB)
Operating temperature	-40 to +70°C
Storage temperature	-55 to +85°C
Water immersion	up to 2M depth
Vibration Sinusoidal	10-500Hz, 0.75 amplitude @ 10g acceleration
Free fall resistance	500 falls onto concrete from 1.2M height
Bump resistance	4000 bumps @ 40g acceleration
Tensile Strength	Tensile of 1500N, cable dependent
Cable Variations	Compatible with tactical cable: Plug ≤6mm o/d Bulkhead ≤3mm o/d Other cable sizes available on request

For details and technical information on the hybrid versions, please contact the factory.  
All tests compliant to BS EN 186000-1 specifications

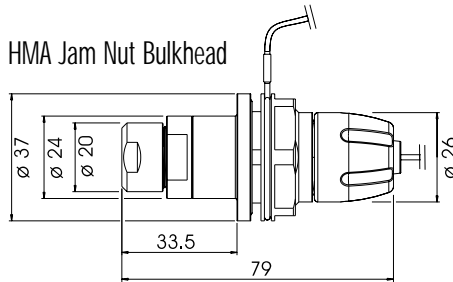
### Technical Drawings

All dimensions are in mm

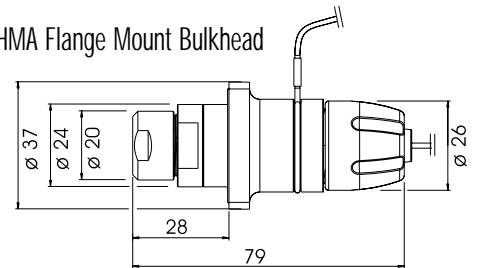
HMA Series Plug



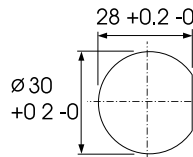
HMA Jam Nut Bulkhead



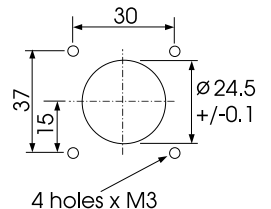
HMA Flange Mount Bulkhead



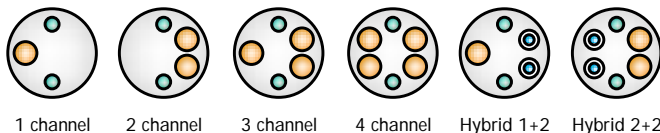
Panel Cutout  
HMA Jam Nut Bulkhead



Panel Cutout  
HMA Flange Mount Bulkhead



### Planforms



1 channel    2 channel    3 channel    4 channel    Hybrid 1+2    Hybrid 2+2

Protective caps are included with assemblies unless otherwise stated  
Termination and repair kits are available

Stratos Ltd. is registered to BS EN ISO9001

Whilst due care has been taken to ensure the contents of this data sheet are accurate, Stratos Lightwave™ cannot accept liability for any errors or omissions that may occur. We reserve the right to alter specifications of products without prior notice.



Hollands Road Industrial Estate, Haverhill,  
Suffolk CB9 8PR England  
Tel +44(0)1440 706441 Fax +44(0)1440 762044

Sofortkontakt unter:   
Herr Michael Vollmann   
+49 7132 9969-15   
E-Mail: vollmann@sinus-electronic.de

